

MONTHLY MEMBERSHIP PROGRESS REPORT

LOCATION INDIA

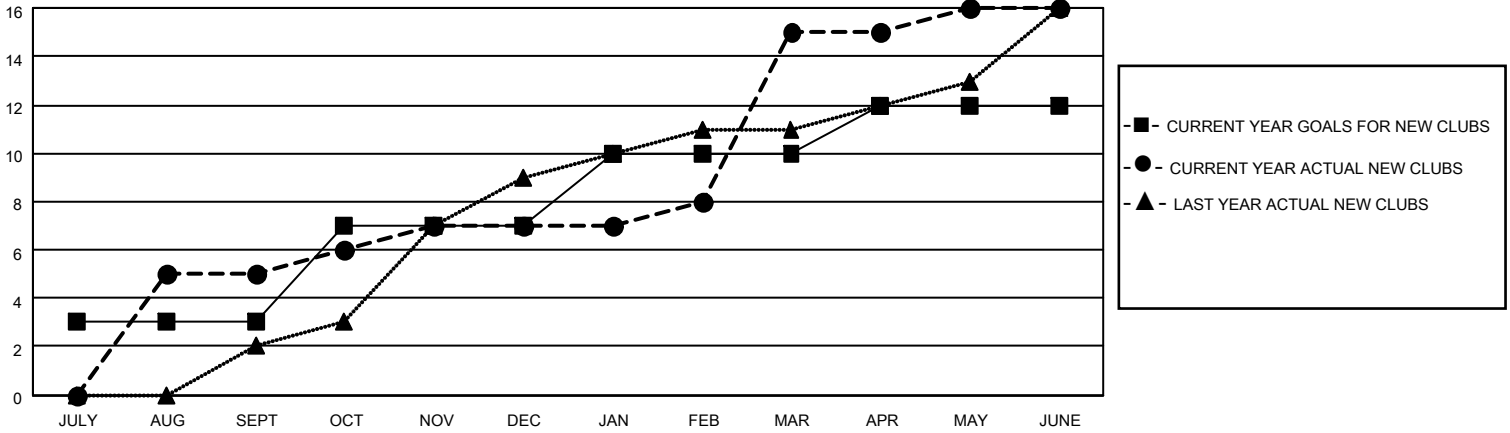
District 318 C

Results as of: 6/30/2023

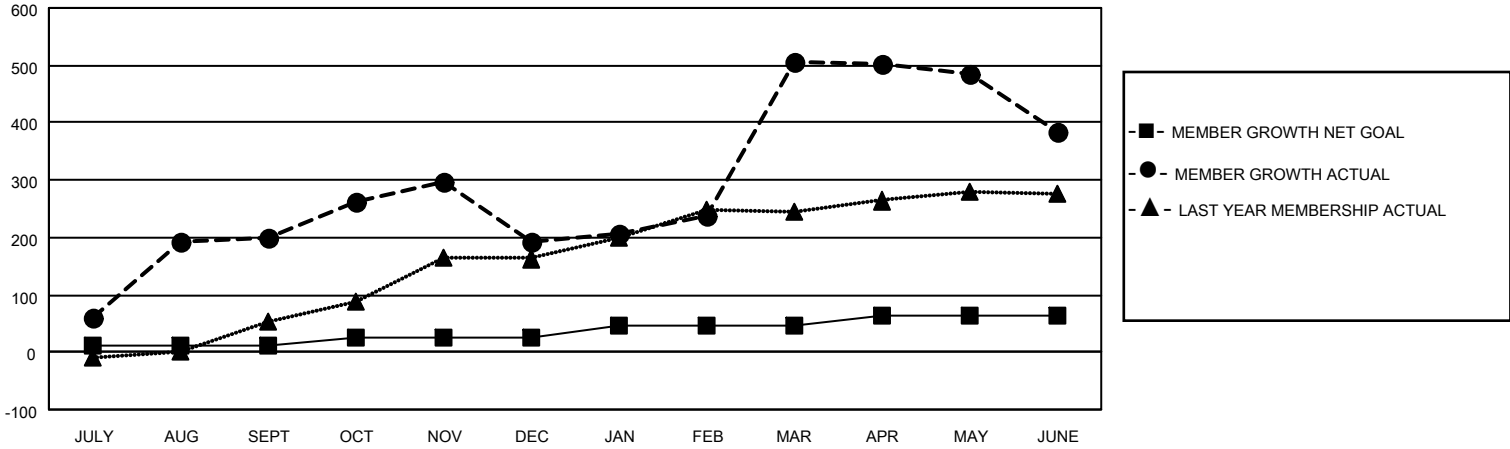
Clubs			
RESULTS FOR 2022-2023			
QUARTER	NEW CLUB GOAL	NEW CLUBS	DROPPED CLUBS
JULY/AUG/SEPT	3	5	0
OCT/NOV/DEC	4	2	3
JAN/FEB/MAR	3	8	0
APR/MAY/JUNE	2	1	0

Members			
RESULTS FOR 2022-2023			
QUARTER	MEMBER GROWTH NET GOAL	MEMBER GROWTH ACTUAL	DROPPED MEMBERS ACTUAL (including transfers)
JULY/AUG/SEPT	10	301	95
OCT/NOV/DEC	15	126	133
JAN/FEB/MAR	20	351	32
APR/MAY/JUNE	20	249	308

GOALS AND ACTUAL NEW CLUBS CUMULATIVE



GOALS AND ACTUAL MEMBERS CUMULATIVE



DROPPED CLUBS: 3

115 CLUBS OF 155 ADDED 1 OR MORE NEW MEMBERS

GENDER DISTRIBUTION

MALE	4,266 (86.11%)
FEMALE	688 (13.89%)
NON BINARY	0 (0.00%)
PREFER NOT TO ANSWER	0 (0.00%)

DROPPED MEMBERS

[CLICK HERE FOR CUMULATIVE MEMBERSHIP DATA](#)

DECEASED	23
CLUB CANCELLED	64
OTHER	481
TOTAL	568

TOTAL FAMILY UNIT MEMBERS 1,186

FAMILY MEMBERS PAYING HALF DUES 627